

PENTAX | Scanning System S-3180

3D laser measurement system

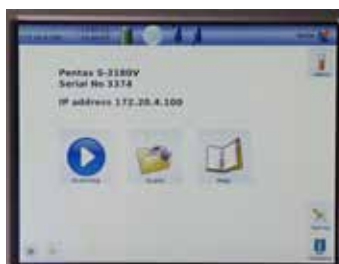


More Applications than ever due to
Increased Point Density



PENTAX

Scanning System S-3180



INTEGRATED CONTROL PANEL

The high-resolution colour display with integrated touch screen enables the scanner to be used intuitively. The operating manual can also be viewed directly on the scanner's display.



ROTATING MIRROR

The rotating mirror is completely encapsulated and extremely well protected from the environment. This makes the scanner ideal for outdoor use. With a maximum rotation speed of 3,000 rev/min and a maximum scan rate of 1 million pixel/sec, it is possible to do complete panorama scans at a high resolution within extremely short time.

THE HD COLOUR DISPLAY

This enables the scans to be displayed immediately after scanning in various views.



A simple, clear menu structure with many functions enhances efficiency and operation speed. For example, standard scans can be started with only two clicks.

In addition, simple measurement and navigation functions can be conducted in order to guarantee quality assurance already on-site.



PENTAX

Scanning System S-3180



USB PORTS

The scanner has two USB ports for 32 GB flash drives which are integrated into sealed closure casings. This allows external data storage on removable devices. An external hard drive can also be connected to one of the USB ports.

LEMO CONNECTIONS

In combination with the USB ports, the external LEMO connections are used for controlling accessories, as the M-Cam. Furthermore, external sensors like a GPS receiver can be connected. The submitted time stamps can be used to synchronize the scan data precisely and be fed into the scan data stream. Digital timestamp output signals are available as well.



CONNECTIONS FOR POWER SUPPLY AND DATA DOWNLOAD

These connections are located in the lower scanner part.

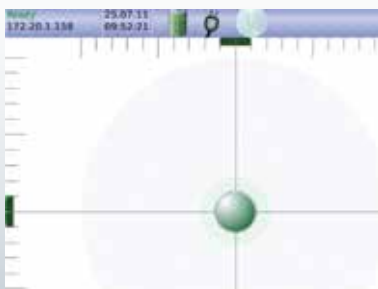


ETHERNET/W-LAN INTERFACE

The integrated W-LAN interface allows to command the scanner using a standard web-browser (Internet Explorer, Mozilla Firefox, etc.) via the IP address.

LASER PLUMMET

With the laser plummet, the instrument can be accurately positioned above a known physical coordinate.



DUAL-AXIS COMPENSATOR

The built-in dual-axis compensator helps to improve the registration and supports geodetic measurement techniques, as free positioning. The dual-axis compensator is also used as a bubble level for horizontal set-up of the scanner.

**The precise way of scanning:
highly accurate, reliable and flexible.**

The PENTAX Scanning System S-3180 sets new standards for 3D laser scanning. The S-3180 is a high-end product deriving from the evolution of the most reliable phase-shift technology.

The PENTAX Scanning System S-3180 is outstanding for its incredible speed and simple operation interface allowing extreme efficiency.

LASER CLASS 1

The PENTAX Scanning System S-3180 with a wavelength of 1.5 μm complies to laser class 1 (EN 60825-1) thus the laser beam is rated harmless.

RANGE 187 METRES

Due to the wavelength and new ranging system the device operates within a maximum range of 187.3 m. This wide range opens up new applications for phasebased scanners.

HIGH-SPEED 1 MILLION PIXEL/SECOND

With a maximum measurement rate of 1,016,027 pixel/sec the PENTAX Scanning System S-3180 is the fastest 3D laser scanner in the world.

RESOLUTION/QUALITY

Four different quality levels can be combined with seven resolution settings. Depending on the application or objective, the best fitting configuration can be chosen. In this way, it is possible to keep a high density resolution even at great distances.

320° X 360° FIELD-OF-VIEW

The extended 320° x 360° field-of-view yields maximum coverage.

LIGHT AND COMPACT

The PENTAX Scanning System S-3180 is very light: 9.8 kg. Another big advantage is its compact size: 170 x 286 x 395 mm (w x d x h).

INTUITIVE OPERATING CONCEPT

The touch screen display, with a recently developed menu system offers the user a great deal of information and useful features, that are easy and clear to use because of the intuitive operating concept.

QUICK-SCAN FEATURE

The quick-scan button only needs to be pressed twice to start the pre-defined standard scan. The entire start phase takes only a few seconds.

100% STAND-ALONE

The stand-alone principle has been improved. The scan data can be stored on two removable USB flash drives and a flash card. The colour display allows visual control of the scan with zoom and basic measuring functions. The external computer for scanning control has become obsolete.

HIGH QUALITY DATA

The PENTAX Scanning System S-3180 distinguishes through highest precision in angle and distance control. The low noise level conserves highest quality of data even on differing surfaces and long ranges. The typical high accuracy within millimeters can be achieved even at the highest data capture rates.

ENCAPSULATED MIRROR

The laser beam is reflected by a rotating mirror which can reach a speed of up to 50 rev/sec. This mirror is enclosed in a patented body with protective glass. A high degree of quality, robustness and durability are guaranteed.

Accessories



The hard case ensures the safe storage of the accessories

Every S-3180 laser scanner comes complete with an accessory case that includes the following items:

- 1 extra battery pack
- 1 charger cradle
- 1 battery charger
- 1 Ethernet cable
- 1 power cable
- 1 extension cable
- 1 license of Software LRC Elements

For the registration of several scans in one project, there are various target types available.



PaperTarget

The typical PaperTargets can also be employed with the PENTAX S-3180.



Profi Target

The PENTAX Profi Targets can be rotated two-axially around the target centre for perfect alignment to the scanner position.



AutoTarget

The PENTAX AutoTargets offer the fastest way of registration since they are automatically recognized in the scan by the software. Numbering also takes place automatically with the integrated code ring.

Whichever target is used, the software automatically recognizes the target centre to an accuracy of less than one pixel.

In addition, it is possible to include tachymetry data for georeferencing, and it is possible to increase accuracy of registration through bundle adjustment.



The M-Cam can easily be mounted

The M-Cam, an industrial colour camera with a resolution of five megapixels takes pictures in order to colour the point clouds (360° x 320°). It can be easily mounted onto the scanner, and is connected via two USB cables and the LEMO cable. The camera and power supply are then controlled by the scanner. The pictures are automatically associated with the respective scan and saved. The camera calibration specifications are included in the bundle.



Aluminium tripod

The aluminium tripod is very light and easy to handle. Its stability gives suitability for various uses. The quick-release clamps make it very easy to adjust the height and to quickly assemble and dismantle it. A dolly ensures maximum mobility.

Technical Data

Compact high-speed phase-based laser scanner with great precision, range and spherical field of view. Unique stand-alone concept with integrated battery and color display with touch screen. Built-in dual-axis compensator and laser plummet.



Laser system

| | | | |
|-----------------------------------|------------------------------------|------------|------------|
| Laser class | 1 | | |
| Beam divergence | < 0.3 mrad (full angle) | | |
| Beam diameter | Approx. 3.5 mm (at 0.1 m distance) | | |
| Range | 187.3 m (unambiguity interval) | | |
| Minimum distance | 0.3 m | | |
| Resolution range | 0.1 mm | | |
| Data acquisition rate | Max. 1.016 million pixel/sec. | | |
| Linearity error ¹ | ≤ 1 mm | | |
| Range noise | Black 14 % | Grey 37 % | White 80 % |
| Range noise, 10 m ¹² | 0.5 mm rms | 0.4 mm rms | 0.3 mm rms |
| Range noise, 25 m ¹² | 1.0 mm rms | 0.6 mm rms | 0.5 mm rms |
| Range noise, 50 m ¹² | 2.7 mm rms | 1.2 mm rms | 0.8 mm rms |
| Range noise, 100 m ¹²³ | 10 mm rms | 3.8 mm rms | 2.0 mm rms |
| Temperature drift | Negligible | | |



Deflection unit

| | |
|----------------------------------|---|
| Vertical system | Completely encapsulated rotating mirror |
| Horizontal system | Device rotates about its vertical axis |
| Vertical field of view | 320° |
| Horizontal field of view | 360° |
| Vertical resolution | 0.0004° |
| Horizontal resolution | 0.0002° |
| Vertical accuracy ¹ | 0.007° rms |
| Horizontal accuracy ¹ | 0.007° rms |
| Rotation speed | Max. 50 rps (3,000 rpm) |



Deflection unit

| Angle resolution | Pixel/360° horizontal & vertical | Scan duration | | | |
|-------------------------------|-------------------------------------|---------------------------|-----------------------------|---------------------------|------------------------------|
| | | Less quality ⁶ | Normal quality ⁶ | High quality ⁶ | Premium quality ⁶ |
| "preview" ⁴ | 1,250 | --- | 0:26 min | --- | --- |
| "low" | 2,500 | 0:26 min | 0:52 min | 1:44 min | --- |
| "middle" | 5,000 | 0:52 min | 1:44 min | 3:22 min | 6:44 min |
| "high" | 10,000 | 1:44 min | 3:22 min | 6:44 min | 13:28 min |
| "super high" | 20,000 | 3:28 min | 6:44 min | 13:28 min | 26:56 min |
| "ultra high" ⁵ | 40,000 | --- | 13:28 min | 26:56 min | 53:20 min |
| "extremely high" ⁵ | 100,000 | --- | 81:00 min | 162:00 min | --- |



Miscellaneous

| | |
|--------------------------|--|
| Dual-axis compensator | Resolution: 0.001° Measurement range: +/- 0.5° Accuracy: < 0.007° Selectable on/off |
| Laser plummet | Laser class: 2 Accuracy of plummet: 0.5 mm/1m Laser point diameter: < 1.5 mm at 1.5 m |
| Levelling display | Electronic level in onboard display and LRC |
| Communication | 1GB Ethernet/W-LAN |
| Data storage | Internal 64 GB flash card, 2 x 32 GB USB external flash drive |
| Data transmission | Ethernet or USB 2.0 |
| Integrated control panel | Touch screen with colour display for browsing scan data and colour pictures, with measuring and navigation functions |
| Interfaces | 2 x USB, LEMO 9-pin und LEMO 7-pin connections for M-Cam and external sensors like GPS, odometer, etc. |

Power supply

| | |
|-------------------|---|
| Input voltage | 24 V DC (scanner) ; 100 – 240 V AC (power unit) |
| Power consumption | < 65 W (on average) |
| Operating time | > 2.5 h (internal battery) |



Ambient conditions

| | |
|-----------------------|--|
| Operating temperature | -10 °C ... +45 °C |
| Storage temperature | -20 °C ... +50 °C |
| Lighting conditions | Operational in all conditions, from sunlight to pitch darkness |
| Humidity | Non-condensing |
| Protection class | IP 53 |

Dimensions and weights

| | |
|------------------------|--------------------|
| Scanner | |
| Dimensions (w x d x h) | 170 x 286 x 395 mm |
| Weight | 9.8 kg |
| Battery | |
| Dimensions (w x d x h) | 170 x 88 x 61 mm |
| Weight | 1.2 kg |
| AC power unit | |
| Dimensions | 35 x 67 x 167 mm |
| Weight | 0.54 kg |

1. Detailed explanation on request
2. Data rate 127,000 pixel/sec (equivalent to "high resolution / high quality" scan), 1 Sigma range noise, unfiltered raw data, in high power mode
3. All values extrapolated
4. Resolution not recommended for exact measurements, only for positioning higher resolution scan selections!
5. Only recommended for scan selections because of the enormous amount of data
6. Doubling ("less quality") or halving ("high quality") the data rate (pixel/sec) theoretically increases the range noise on each pixel by 40% ("less quality") or decreases it by 40% ("high quality"), compared to "normal quality". Depending on the roughness of the surveyed surface, in the field this difference might result less, especially when scanning objects with a bright surface at short distances, e.g. indoors.

High Precision and Flexibility

The new PENTAX Scanning System S-3180 is highly precise, reliable and flexible. These improvements can be appreciated in your daily work.

The technical specifications of the S-3180 set new standards in the field of 3D laser scanning. Its enormous scanning speed, extended range of 187 m and low weight make it the perfect choice for countless applications.

Meeting laser class 1 requirements, the Scanning System S-3180 can be used without restriction in almost any environment. This makes the scanner an interesting option from heritage even to busy environment applications.

Due to the laser scanner's low weight and unique stand-alone concept, it can also be employed in areas difficult to access like industrial plants or forests.

Having the protection class IP 53 means that the device is protected against splash water and dust.

The extremely fast scanner makes it possible to work efficiently on-site. Scans can be completed in very short time, depending on the requirements.

At the scene of an accident, for example, all the relevant data can be gathered very quickly without interrupting the work of the police or rescue teams. Downtimes of production plants can similarly be reduced to a minimum.



Town hall Wangen in Allgäu in 3D view

Mapped point cloud - Warsaw University



Complex 3D model used in palaeontological research



Applications



Fort Konstantin

CULTURAL HERITAGE

The PENTAX Scanning System sets an impressive record in this field because of its contact-free, and above all rapid measuring ability. This reduces costs tremendously in comparison to traditional measurement systems.

The optional M-Cam enables the whole point cloud to be coloured, which gives a photorealistic impression of a scan with a high level of detail. The low noise level means that despite long distances, a very high data quality and scan resolution can be achieved and even small details can be captured.



Scanning sample areas

FORESTRY

The unique stand-alone concept and low weight make the PENTAX Scanning System the ideal surveying instrument in this field. The absence of peripheral devices allows quick and effective work, even in most inaccessible field conditions. The new lightweight aluminium tripod completes full physical flexibility.

The protection class IP 53 means that the scanner is not affected by splash water or dust. The low measurement noise guarantees a detailed and precise evaluation of the forest land.



Helicopter crash Regional CID Baden-Württemberg

FORENSIC SCIENCE

The decisive advantage of the PENTAX Scanning System in forensics is the immense speed. The crime scene can be documented holistically without interfering with the running investigation. The optional M-Cam provides colour information in order to create a photorealistic image of the scene. The high resolution enables to capture even inconspicuous details being preserved as evidence.

Applications



3D point cloud of a burnt restaurant

INSURANCE

The enormous scan rate and high resolution allow the Scanning System to quickly “freeze” scenes for later analysis and in extraordinary quality.

In this case, the data serves mainly for preserving evidence and documenting damage.

Using the LFM/LaserControl software, the scenes can then be visualized afterwards. This leads to great time savings for accident reconstruction, checking plausibility where manipulation is suspected and many other purposes of insurance interest.



BubbleView® in LFM

INDUSTRY

The PENTAX Scanning System’s extreme speed makes it possible to reduce downtimes of industrial plants to a minimum. The high level of detail facilitates modeling of extraordinary accuracy.

This enables a subsequent comparison between the revamp design and the as-built site. One other advantage is that the scanner can operate in a temperature range of -10 °C to +45 °C.



Cave paintings in Wadi Sura

ARCHAEOLOGY

The PENTAX Scanning System is the perfect choice on archaeological sites. Its high range, elegant stand-alone concept, low weight and large temperature range make this scanner the ideal measuring instrument around the globe. Large areas can be mapped with a reduced number of scans, resulting in detailed three-dimensional true-scale models.

The optional M-Cam can be used to capture colour information. Compared to conventional methods, much time can be saved. Unrivaled levels of precision can be achieved.

The PENTAX Scanning System S-3180 is based on the PENTAX Scanning System S-2100 and one of the fastest 2D profiling laser measurement systems in the world.

With its scan rate of 1 million points per second and maximum scan speed of 100 rev/sec, very short distances between profiles can be achieved even at high speeds. At the highest point density of 40,960 points/360°, even small objects can be captured and processed by the software.

Since the new laser measurement system complies to laser class 1, the scanner can be used in urban environments without restriction.

A hardware-assisted tried and tested pixel-by-pixel synchronization allows processing of external signal input for scan data positioning.



The PROFILER is also suitable for use on fast-moving mobile platforms like trains.

Using the LEMO connections, GPS, displacement sensors and counters can be attached, and the external timing pulses directly fed into the digital scan data stream.

The scanner can dispatch digital synchronisation pulses through the LEMO connectors. The new 1 GBit Ethernet interface allows the scan data to be transmitted online to an external PC in case of realtime evaluation or data visualization.

The S-3180 is equipped with a colour touch screen and intuitive operating concept. By just two clicks, the S-3180 can be configured and started.



Mounting bracket for overhead use of the S-3180 available as accessory.

LaserControl Software

LaserControl provides all necessary tools to manage your scan jobs efficiently. It is a unique software solution with complete workflow from data capturing to delivery. Three different software packages are available for getting the ideal solution according to your needs.

Elements

LaserControl **Elements** is the freedom to view and browse your point cloud data without any cost. Besides checking the accuracy status of the device calibration, basic measurement functions are implemented. Furthermore it is the key to access and operate all products of the entire PENTAX Scanning System family.

Professional

LaserControl **Professional** is the standard solution for common use with every laser scanner of the PENTAX Scanning System. A suite of filters allow differentiated preprocessing of scan data and are the key to a highly accurate registration. By adding colour information with the included colour module the scan data is ready for post-processing through a wide range of export formats. Naturally all LaserControl Element features are included. In addition the Kinematic function gives extended usability for profiling applications.

Professional PLUS

LaserControl **Professional PLUS** provides extended functions for registration, additional data visualisation and project management tools. Both Cloud-to-Cloud and Plane-to-Plane registration decrease the need for targets dramatically. Saving time in the field and in the office are striking benefits of these future orientated registration tools. Furthermore fly throughs can be generated, simulated and saved. Your static imagery can be rectified and printed to scale. The relocation of misplaced data with the mirror filter is the right tool to bring your point clouds to perfection. Finally the linktool offers you best usability for project management.

COLOUR

An ideal starting point for visualising objects is obtained by combining 3D data with digital photography. The documentary value of the colour data is important for many applications. The colour images are projected onto the point clouds and provide a photographic impression of the object in 3D.

FORENSICS

The forensics modul is a clientspecific product design that also equates the high requirements from the German police. Using 3D data enables investigators to visualise the crime scene and adjust the storyline.

IMPORT/EXPORT

A great variety of import and export formats are supported by LaserControl. As well as many ASCIIbased exchange formats, the new binary standard formats OSF, PTG and ASTM-E57 can also be used for export.

LFM Software



LFM is hardware and software vendor neutral. It accepts data from all 3D laser scanners and exports to 3D integrated plant design systems CAD and Review platforms.

Whether you are a service provider looking for fast database generation, an owner operator looking for an effective asset management tool, or a designer working on the latest process plant for a major oil and gas multinational company, the use of LFM Software brings business benefits to brownfield and as-built documentation projects.

LFM software users can benefit from an open system without compatibility restriction. LFM aims to be neutral on both ends: neutral with respect to capture devices and neutral with respect to CAD and modelling technologies. Surveyors and service providers can use LFM to create any number of CAD deliverables. Engineering companies and Owners/Operators can work with LFM laser scan data in CAD packages from Autodesk, AVEVA, Bentley, Intergraph or VR Context.

LFM is compatible with the latest PENTAX Scanning System generation and also accepts 3D laser scan data from previous generations and other hardware systems. This has cost saving implications for LFM customers. If the hardware system changes, the software solution does not, avoiding expensive switching costs.

LFM is driven by the BubbleView®. Make annotations and measurements, create 3D models and view clashes in the BubbleView®.



LFM is a powerful 3D laser scanning software package, which is relevant throughout the laser data and asset lifecycle.

THE LFM SUITE

LFM Register

LFM Register™ allows users to take raw data from individual 3D laser scanning positions and bring them together into a fully co-ordinated framework faster and more efficiently than any other package.

LFM Server

Bring laser scan data into any number of leading CAD packages. Create a database containing an unlimited number of high resolution scans using Infinite Core™ technology. Automatically detect clashes between a CAD design and as-built laser scan data.

LFM NetView

LFM NetView provides users with comprehensive and easy-to-use tools to help projects collaboration even when multiple users are in different part of the world.

LFM Modeller

Rapidly produce 3D CAD models from as-built laser scan data with only a few clicks, and export their intelligent 3D model creations into a wide range of target CAD systems.



PENTAX



* Designs and specifications are subject to change without notice. - Printed in Belgium - BRO-53180-EN-1501 - © PENTAX 2015

TI Asahi Co., Ltd.
International Sales Department
4-3-4 Ueno Iwatsuki-Ku, Saitama-Shi
Saitama, 339-0073 Japan
Tel.: +81-48-793-0118
Fax. +81-48-793-0128
E-mail: International@tiasahi.com

www.pentaxsurveying.com/en/

Your Official Pentax Dealer



ISO
ISO 9001:2008



The CE marking assures that this product complies with the requirements of the EC directive for safety.

JSIMA
Japan Surveying Instruments Manufacturers' Association
Member symbol of the Japan Surveying Instruments Manufacturers' Association representing the high quality surveying products.